



University of California
San Francisco

Integration Project

Project Implementation Process

9/10/2015



Project Implementation Approach

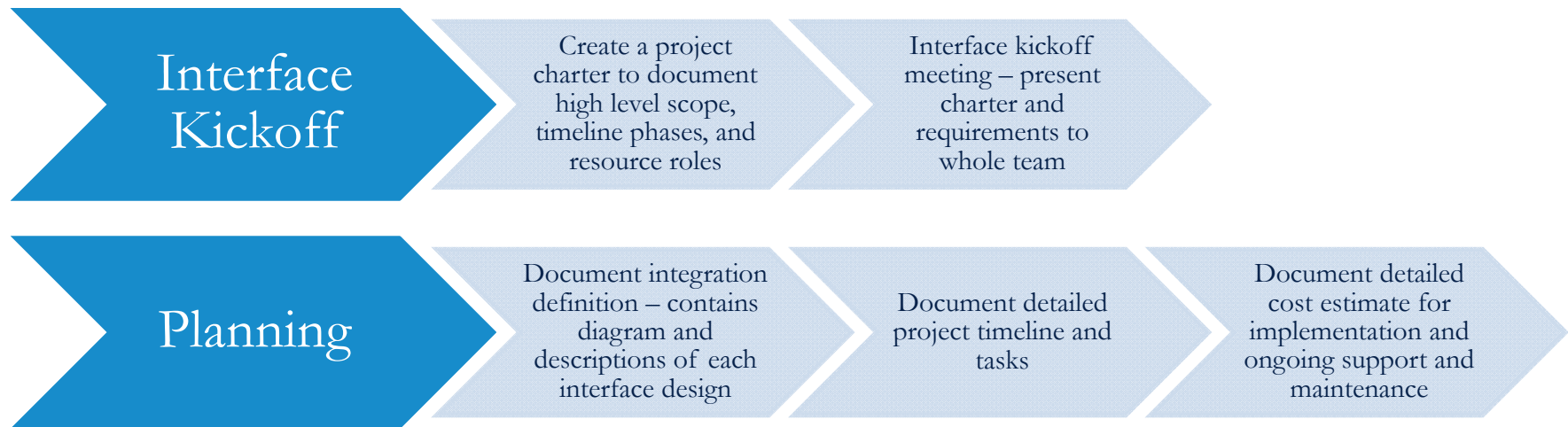


- Once a project is scheduled to begin, these are the general phases for our implementation approach.
- The following slides will go into more detail for each of these phases

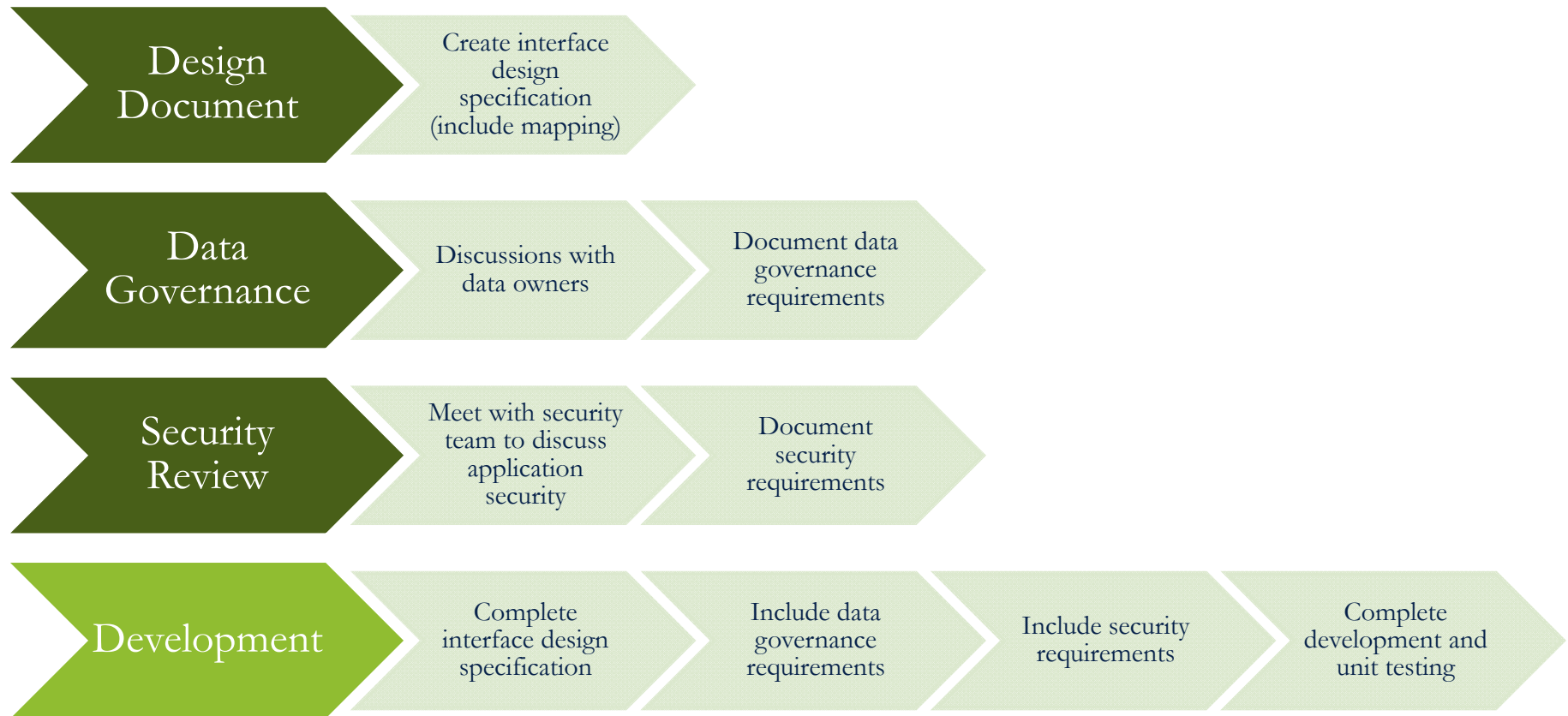
Mule Platform Implementation



- Each project begins based on an agreed-upon start date.



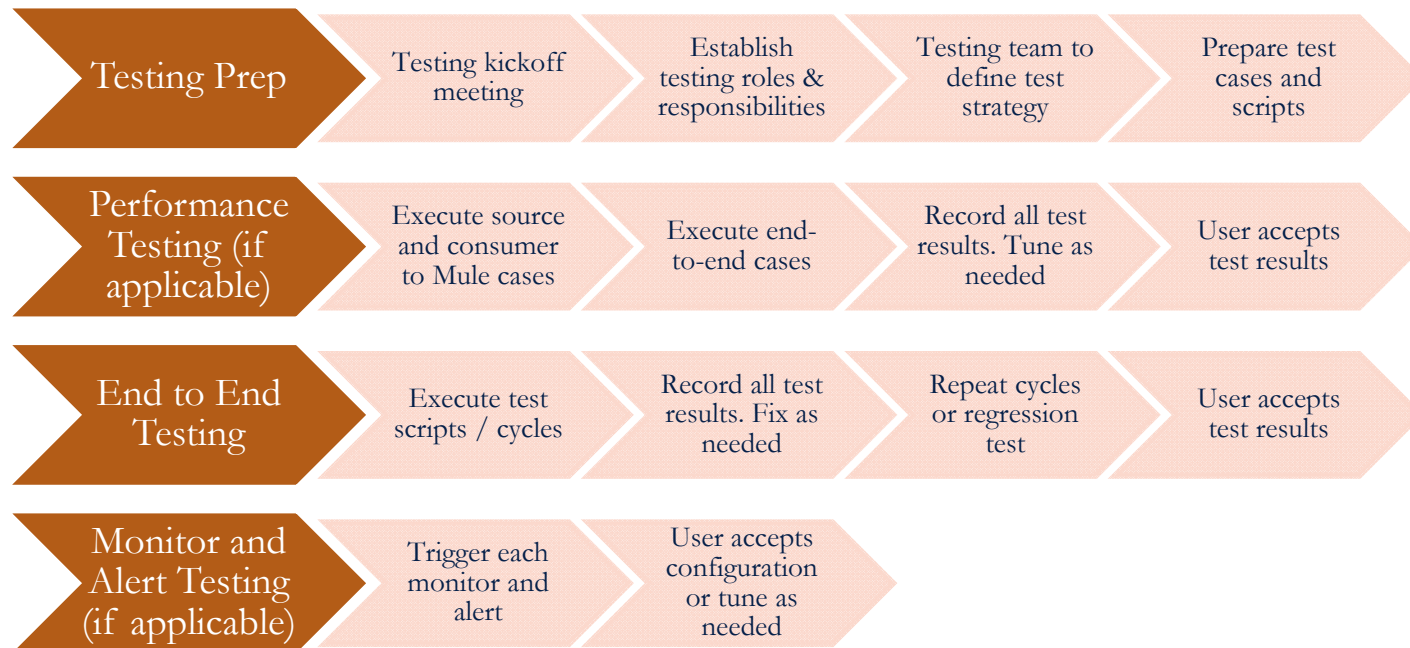
Mule Platform Implementation Model



Mule Platform Implementation Model



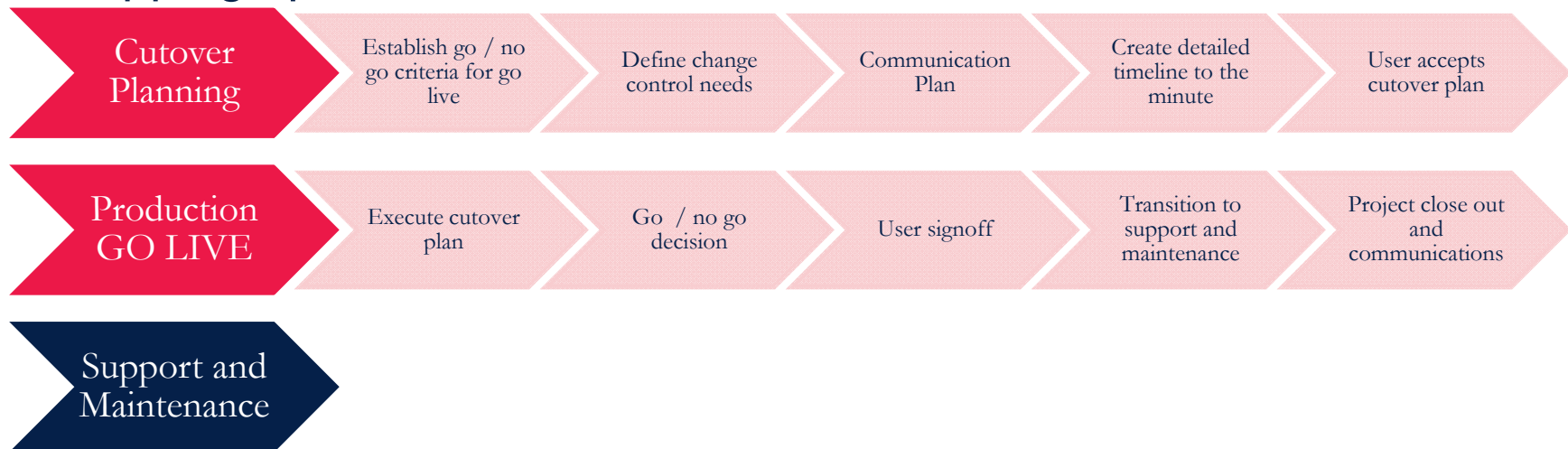
- We switch to the Testing phase after all development and unit testing is complete
- Test preparation should begin when the Development phase is wrapping up



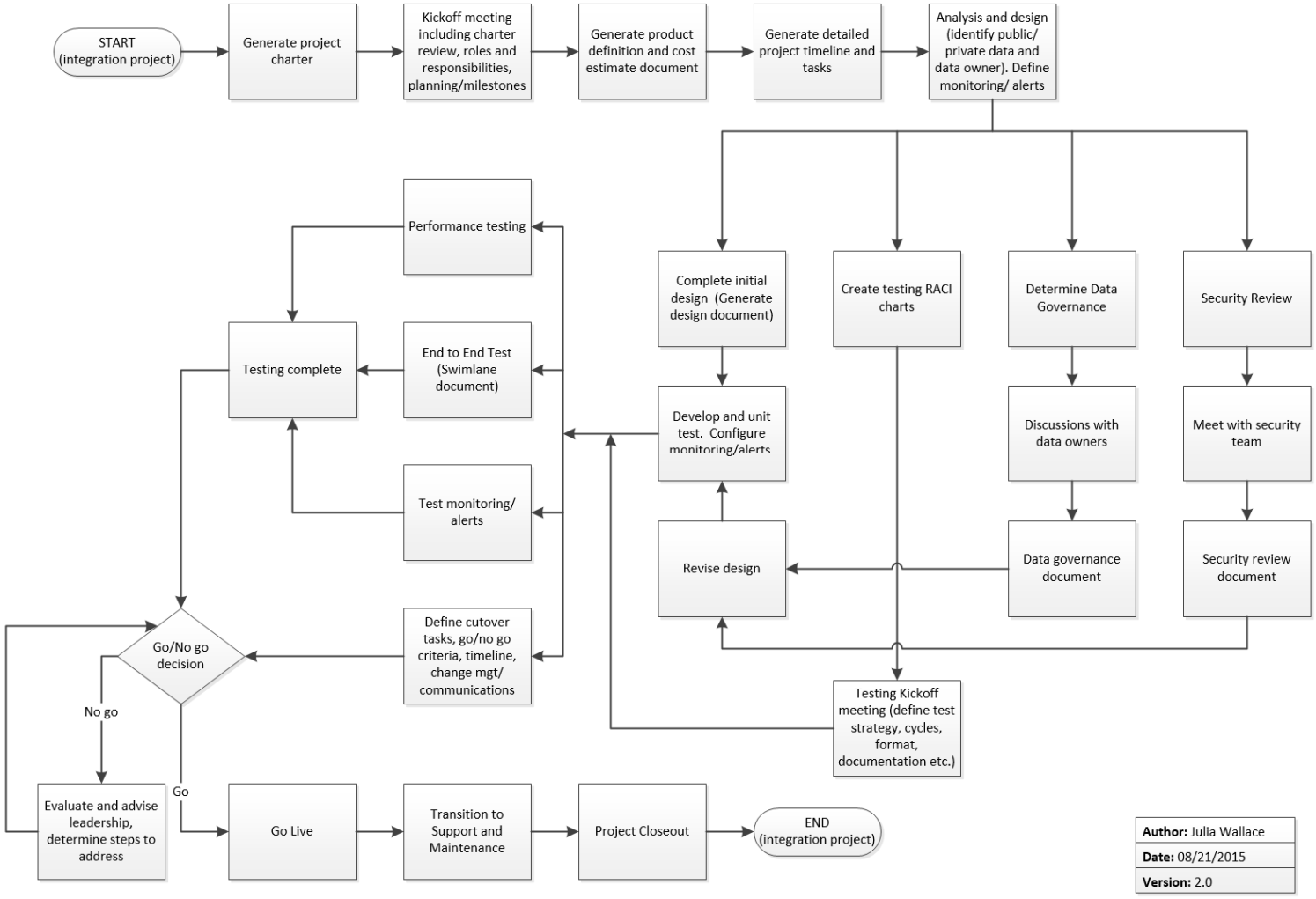
Mule Platform Implementation Model



- Once all testing is complete and there are no outstanding issues we are ready to move into the deployment phase
- Cutover planning should begin while the Testing phase is wrapping up



Mule Platform Implementation Model



Author: Julia Wallace
Date: 08/21/2015
Version: 2.0



University of California
San Francisco