



University of California
San Francisco

Integration Project

Intake Process

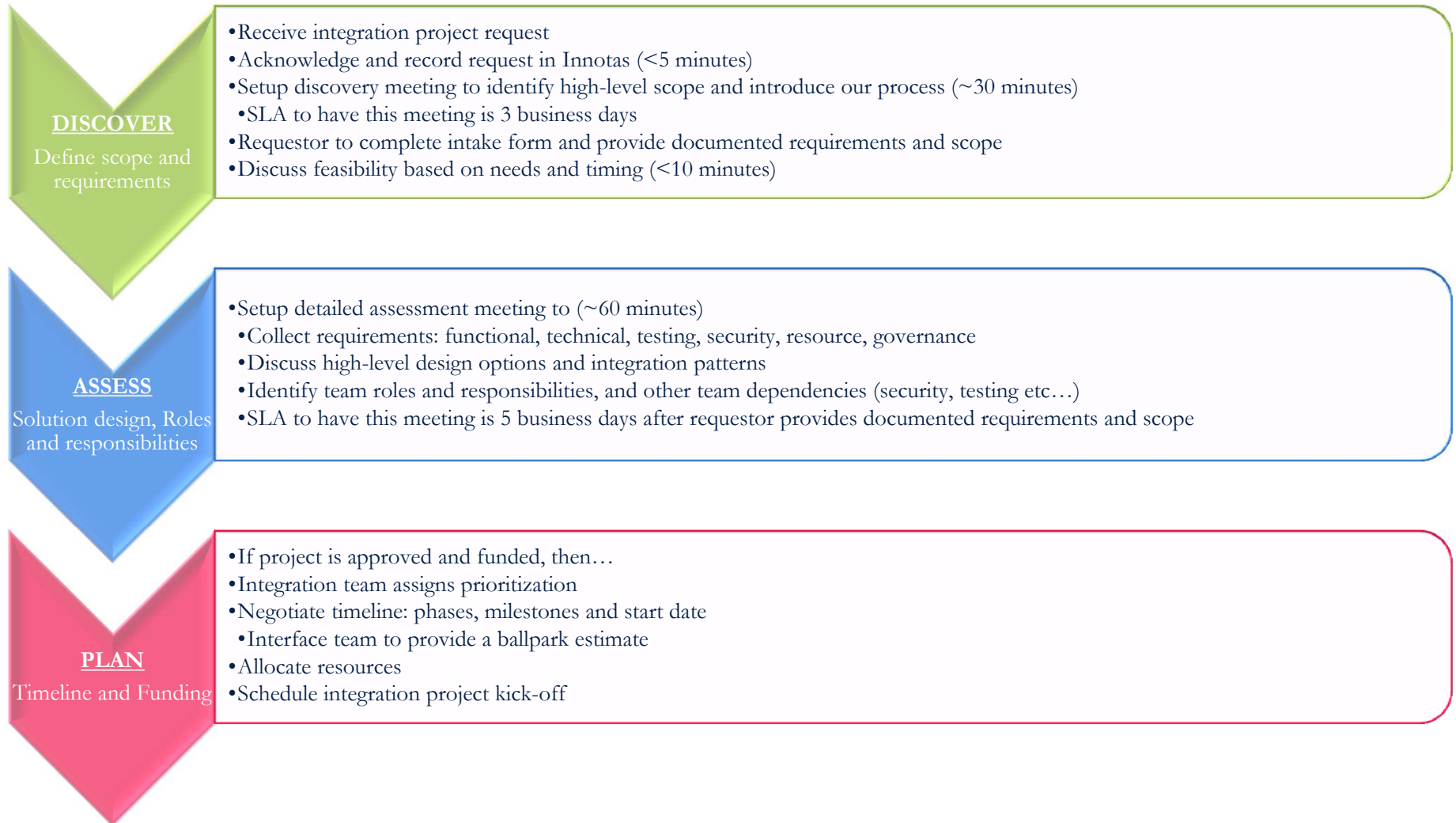
9/10/2015



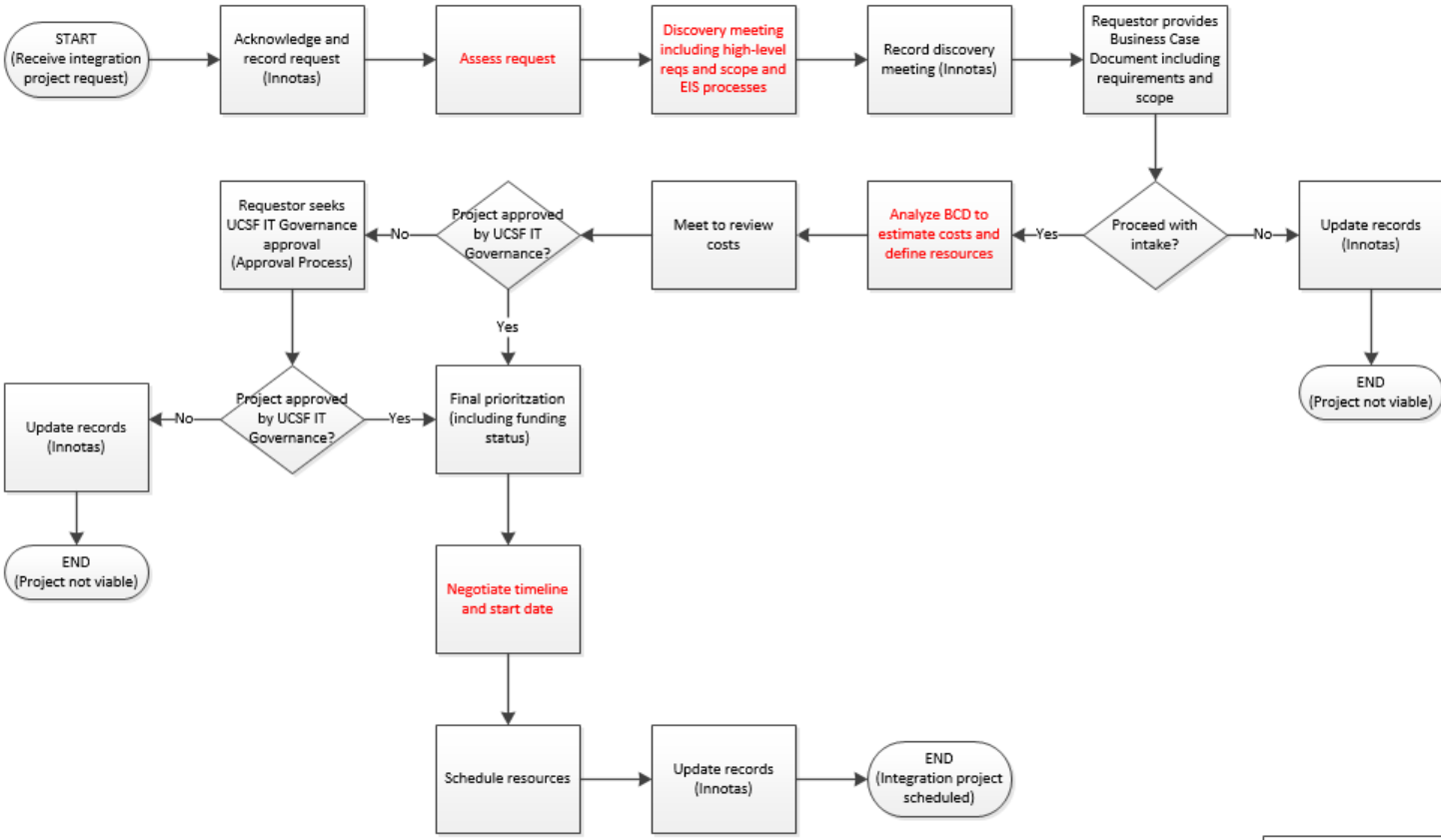
General Intake Process

- **Separate but similar process based on who does the work**
 - Project intake if the interface team does the work
 - PaaS intake if the customer team does the work

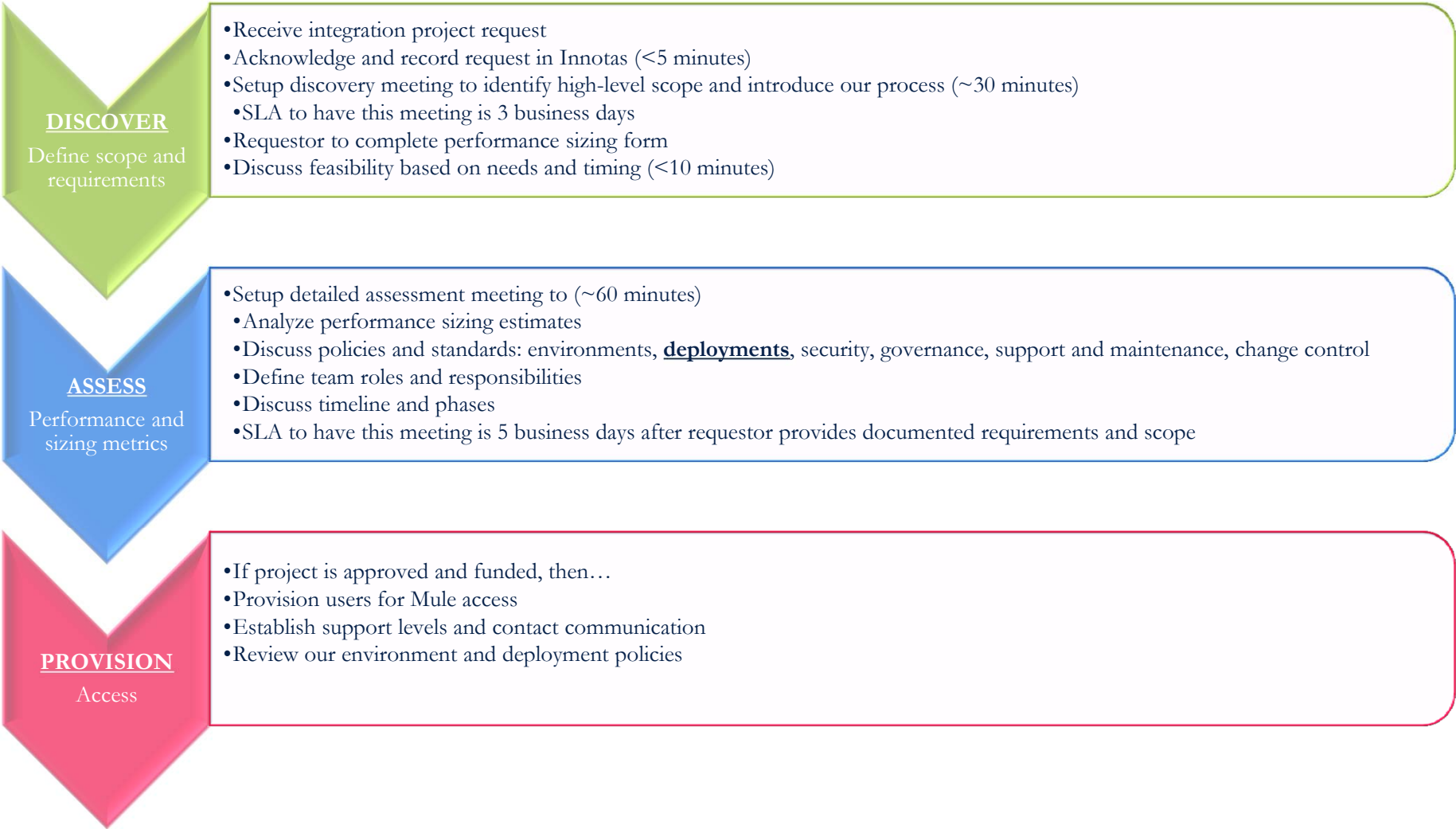
Project Intake Process



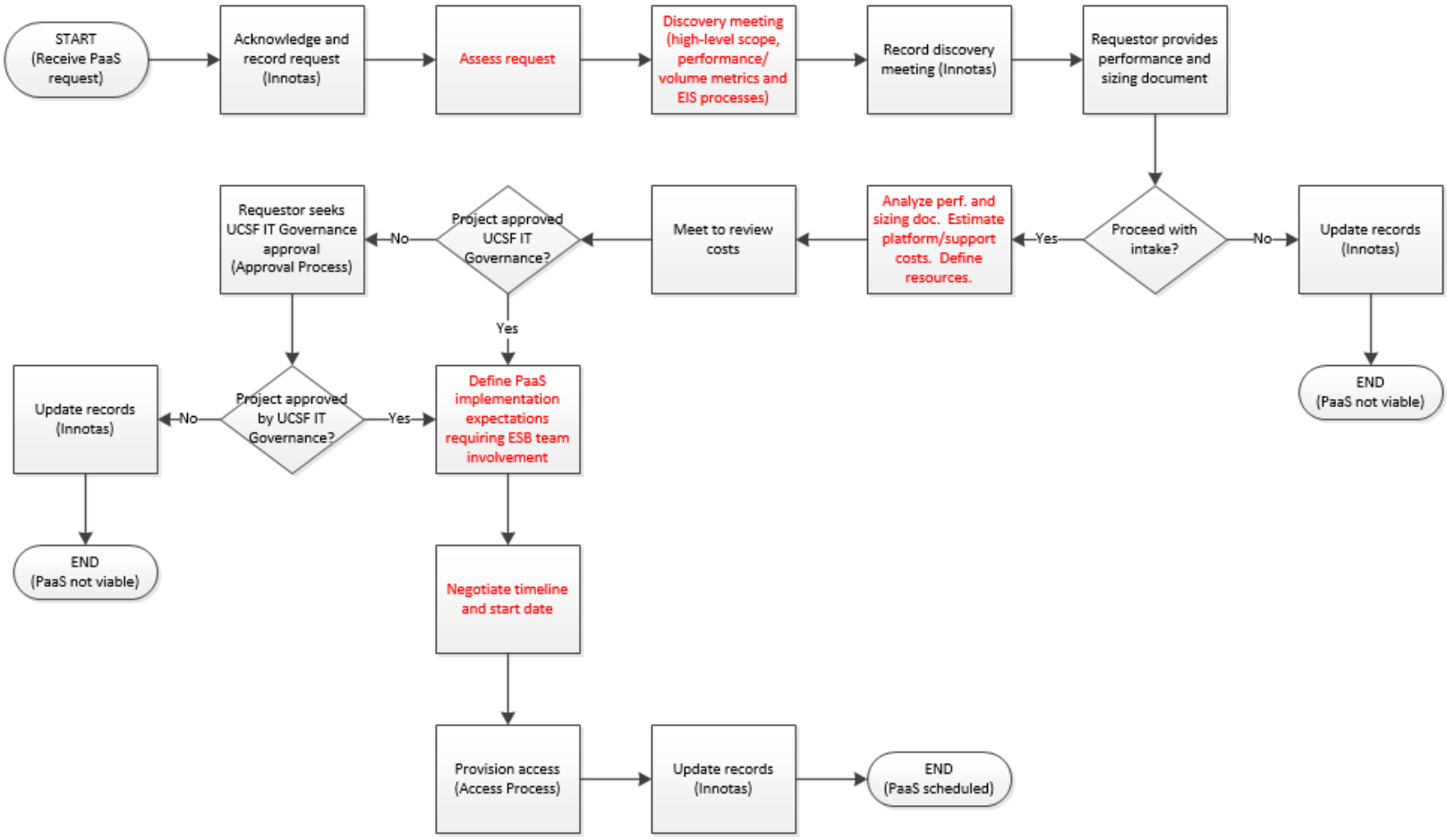
ESB Intake - Project



PaaS Intake Process



ESB Intake - PaaS



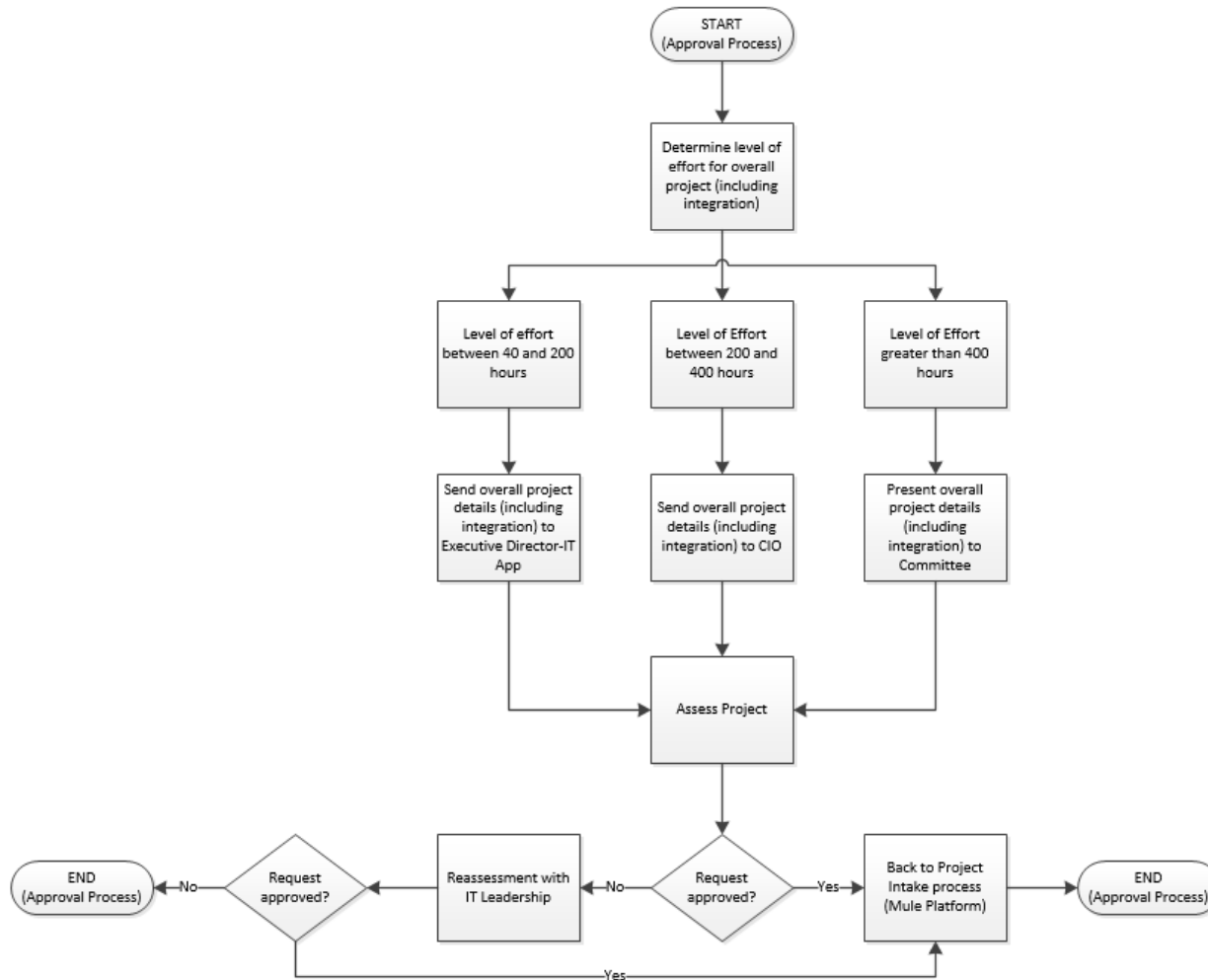
General Approval Process

- **During the intake process we will discuss project approvals**
- **All projects should be approved before our team can allocate resources to your project**

IT Approval Process - DRAFT

- **The number of hours will determine the approval process**
- Executive Director approval is required for projects between 40-200 hours
- Joe Bengfort must approve projects between 201-500 hours
- Committee approval is required for projects > 500 hours

IT Approval Process

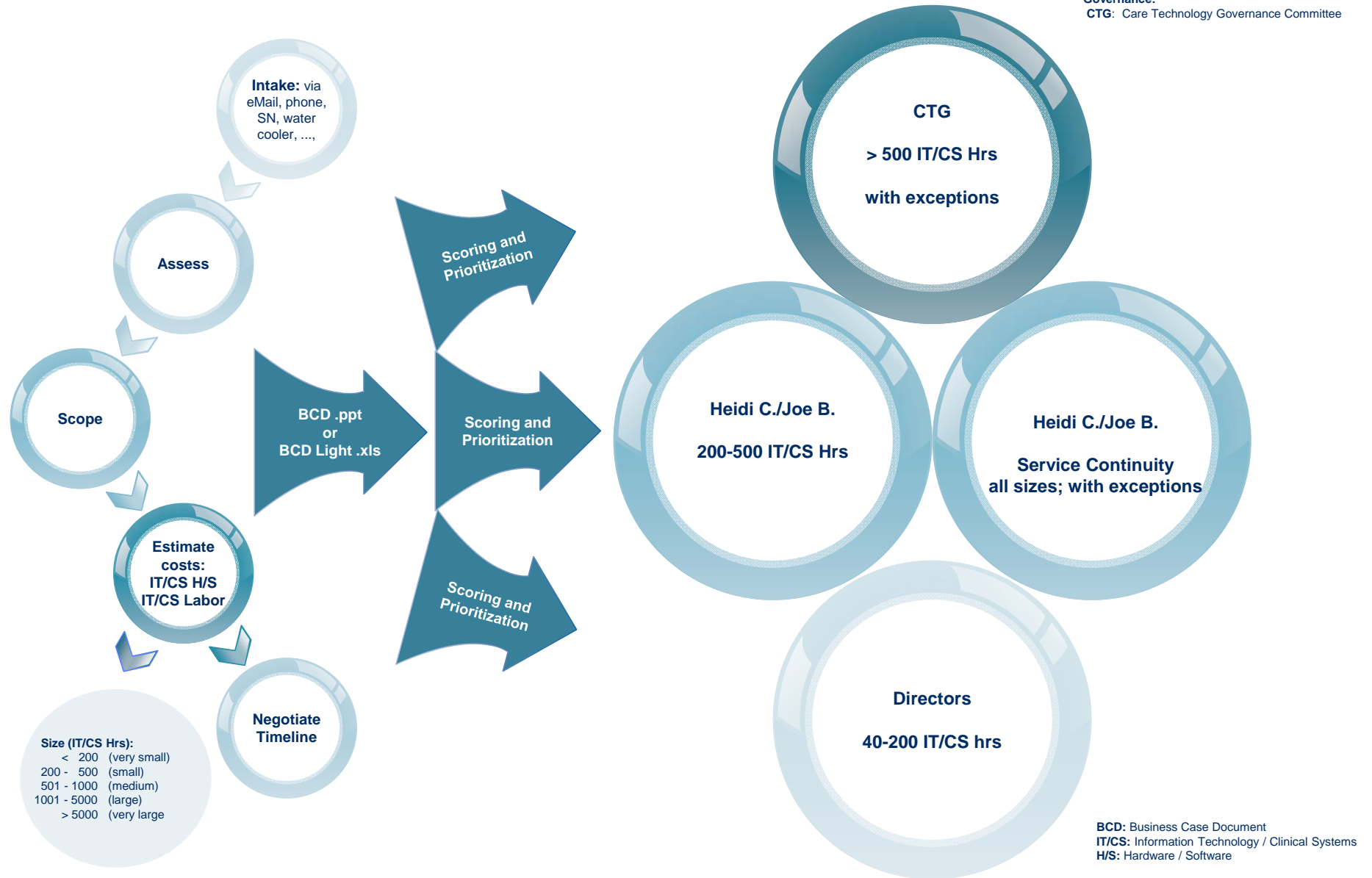


Medical Center IT Approval Process

- **The number of hours will determine the approval process**
- Director approval is required for projects between 40-200 hours
- Heidi Collins and Joe Bengfort must approve projects between 201-500 IT/CS hours
- CTG approves projects over 500 IT/CS hours

IT/CS Project Intake Work Flow Through to Approval

Governance:
CTG: Care Technology Governance Committee





University of California
San Francisco